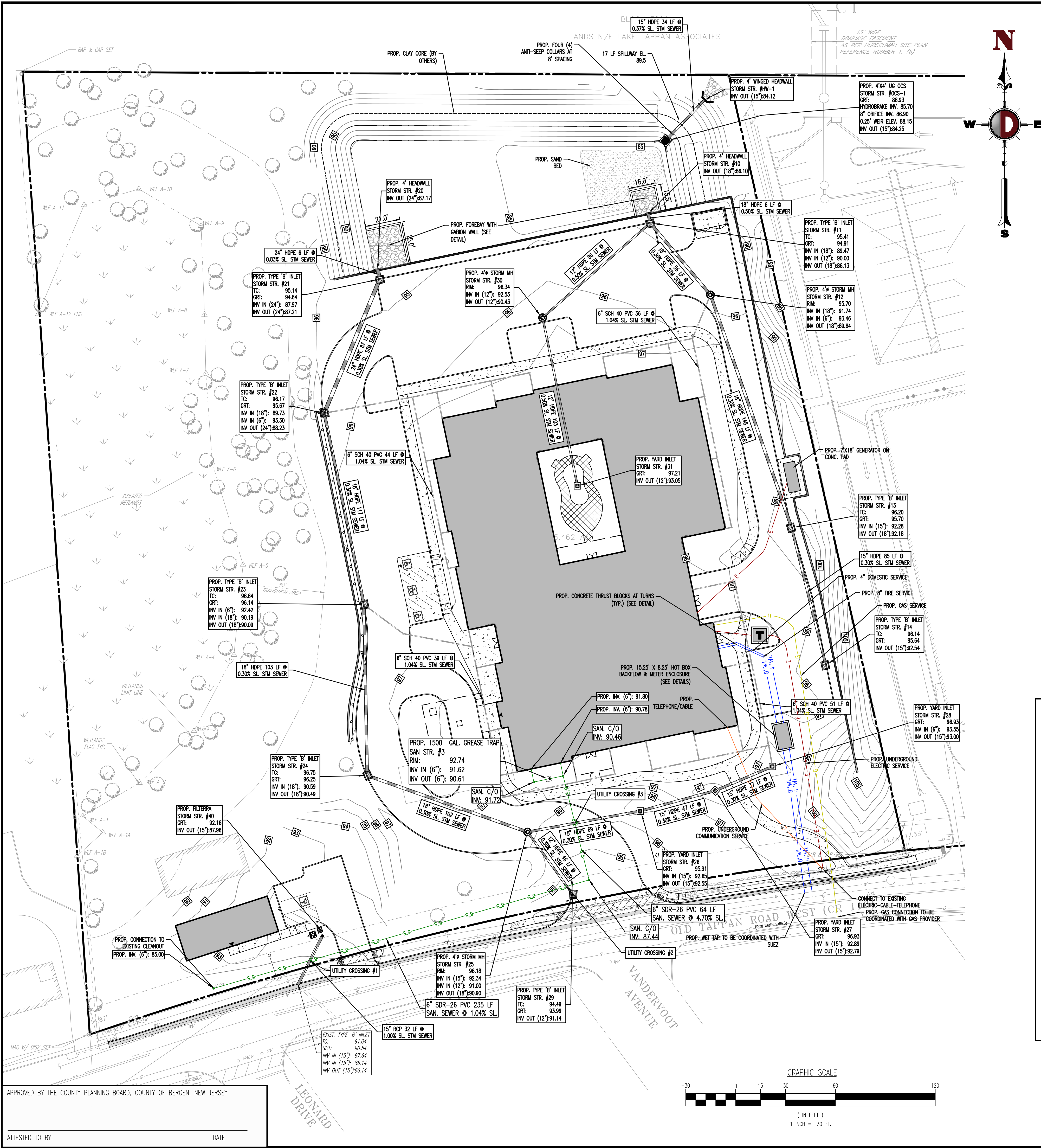


Plotted: 12/17/21 - 5:10 PM. By: jdemartini
File: P:\JECPC PROJECTS\1423 Capital Seniors Housing\09-006 Old Tappan\dwg\Site Plans\142309006SU3.dwg, ---> 07 DRAINAGE AND UTILITY PLAN



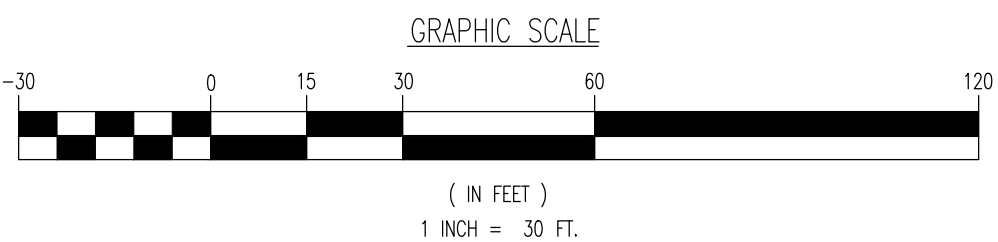
UTILITY NOTES

1. LOCATION OF ALL EXISTING AND PROPOSED SERVICES ARE APPROXIMATE AND MUST BE CONFIRMED INDEPENDENTLY WITH LOCAL UTILITY COMPANIES PRIOR TO COMMENCEMENT OF ANY CONSTRUCTION OR EXCAVATION. SANITARY SEWER AND ALL OTHER UTILITY SERVICE CONNECTION POINTS SHALL BE CONFIRMED INDEPENDENTLY BY THE CONTRACTOR IN FIELD PRIOR TO THE COMMENCEMENT OF CONSTRUCTION. ALL DISCREPANCIES SHALL BE REPORTED IMMEDIATELY IN WRITING TO THE ENGINEER. CONSTRUCTION SHALL COMMENCE BEGINNING AT THE LOWEST INVERT (POINT OF CONNECTION) AND PROGRESS UP GRADE, INTERFACE POINTS (CROSSINGS) WITH EXISTING UNDERGROUND UTILITIES SHALL BE FIELD VERIFIED BY TEST PIT PRIOR TO COMMENCEMENT OF CONSTRUCTION.
2. IT SHALL BE THE CONTRACTOR'S RESPONSIBILITY TO NOTIFY UTILITY "ONE-CALL" NUMBER 72 HOURS PRIOR TO ANY EXCAVATION ON THIS SITE. CONTRACTOR SHALL ALSO NOTIFY LOCAL WATER & SEWER DEPARTMENTS TO MARK-OUT THEIR UTILITIES.
3. REFER TO ARCHITECTURAL DRAWINGS FOR EXACT BUILDING UTILITY CONNECTION LOCATIONS. WHERE CONFLICTS EXIST WITH THESE SITE PLANS, ENGINEER IS TO BE NOTIFIED PRIOR TO CONSTRUCTION TO RESOLVE SAME. SERVICE SIZES TO BE DETERMINED BY ARCHITECT.
4. WATER SERVICE MATERIALS SHALL BE SPECIFIED BY THE LOCAL UTILITY COMPANY. CONTRACTORS PRICE FOR WATER SERVICE SHALL INCLUDE ALL FEES AND APPURTENANCES REQUIRED BY THE UTILITY TO PROVIDE A COMPLETE WORKING SERVICE.
5. ALL WATER MAIN SHALL BE CEMENT-LINED, CLASS 52 DUCTILE IRON PIPE, UNLESS OTHERWISE DESIGNATED.
6. THE MINIMUM DIAMETER FOR DOMESTIC WATER SERVICES SHALL BE 1 INCH.
7. SEWER MAINS SHALL BE SEPARATED FROM WATER MAINS BY A DISTANCE OF AT LEAST 10 FEET HORIZONTALLY, WHERE THIS IS NOT POSSIBLE, THE PIPES SHALL BE IN SEPARATE TRENCHES WITH THE SEWER MAIN AT LEAST 18 INCHES BELOW THE WATER MAIN. ALL SEWER MAINS SHALL BE SDR-35 PVC PIPE UNLESS OTHERWISE DESIGNATED.
8. ALL SEWER PIPE INSTALLED WITH LESS THAN 3 FEET OF COVER, GREATER THAN 20 FEET OF COVER OR WITHIN 18 INCHES OF A WATER MAIN SHALL BE CONSTRUCTED OF DUCTILE IRON PIPE. ALL DUCTILE IRON SEWER PIPE SHALL BE CEMENT-LINED, CLASS 52 PIPE, FURNISHED WITH SEWER COAT, OR APPROVED EQUAL.
9. WHERE SANITARY SEWER LATERALS ARE GREATER THAN 10' DEEP AT CONNECTION TO THE SEWER MAIN, CONCRETE DEEP LATERAL CONNECTIONS ARE TO BE UTILIZED.
10. THE CONTRACTOR IS RESPONSIBLE FOR THE STABILIZATION OF THE EXISTING SEWER MAIN, STRUCTURES AND APPURTENANCES DURING CONNECTION.
11. LOCATION & LAYOUT OF GAS, ELECTRIC & TELECOMMUNICATION UTILITY LINES AND SERVICES SHOWN ON THESE PLANS ARE SCHEMATIC IN NATURE. ACTUAL LOCATION & LAYOUT OF THESE UTILITIES & SERVICES ARE TO BE PER THE APPROPRIATE UTILITY PROVIDER.
12. ROOF LEADER COLLECTION PIPING ARE CONCEPTUAL IN NATURE AND ARE NOT FOR CONSTRUCTION. ACTUAL ROOF LEADER COLLECTION PIPING IS TO BE COORDINATED W/ ARCHITECTURAL PLANS FOR EACH INDIVIDUAL BUILDING. ALL ROOF LEADER COLLECTION PIPING SHALL BE SCHEDULE 40 PVC UNLESS OTHERWISE DESIGNATED.
13. ALL SEWER AND WATER FACILITIES SHALL BE CONSTRUCTED IN ACCORDANCE WITH THE REGULATORY AUTHORITY'S RULES AND REGULATIONS.
14. ALL PROPOSED UTILITIES TO BE INSTALLED UNDERGROUND UNLESS OTHERWISE NOTED.
15. MANUFACTURED REINFORCED CONCRETE STORM PIPE TO CONFORM TO ASTM C-76, CLASS III, UNLESS OTHERWISE DESIGNATED. MANUFACTURED REINFORCED CONCRETE ELLIPTICAL STORM PIPE TO CONFORM TO ASTM C-507, CLASS HE-III, UNLESS OTHERWISE DESIGNATED. REINFORCED CONCRETE STORMWATER PIPE TO BE INSTALLED IN ACCORDANCE WITH AMERICAN CONCRETE PIPE ASSOCIATION INSTALLATION GUIDELINES AND MORTAR OR PREFORMED FLEXIBLE JOINT SEALANTS IN ACCORDANCE WITH ASTM C 990 TO BE UTILIZED TO PROVIDE A SLT-TIGHT JOINT, WHERE SPECIFICALLY INDICATED, REINFORCED CONCRETE STORM PIPE JOINTS SHALL BE WATER TIGHT AND CONFORM TO ASTM C-443.
16. HOPE DRAINAGE PIPE SHALL HAVE A SMOOTH WALL INTERIOR WITH ANNUAL EXTERIOR CORRUGATIONS AND CONFORM TO ASTM F2306. SOLID PIPE SHALL HAVE GASKETED WATER-TIGHT JOINTS MEETING THE REQUIREMENTS OF ASTM F2306 AND ASTM D3212. PERFORATED PIPE SHALL HAVE GASKETED SLT-TIGHT JOINTS MEETING THE REQUIREMENTS OF ASTM F2306 AND ASTM F417. HOPE PIPE SHALL BE FROM A MANUFACTURER WHO IS AN EASTERN STATES CONSORTIUM (ESC) QUALIFIED MANUFACTURER OF HOPE PIPE AND INSTALLED IN ACCORDANCE WITH PIPE MANUFACTURE RECOMMENDATIONS.
17. HP DRAINAGE PIPE SHALL HAVE A SMOOTH WALL INTERIOR WITH ANNUAL EXTERIOR CORRUGATIONS AND CONFORM TO ASTM F2736 (12"-30" PIPE) AND ASTM F2881 (36"-60" PIPE). PIPE SHALL HAVE GASKETED WATER-TIGHT JOINTS MEETING THE REQUIREMENTS OF ASTM D3212 AND ASTM F417. FIELD WATER TIGHTNESS PERFORMANCE VERIFICATION MAY BE ACCOMPLISHED IN ACCORDANCE WITH ASTM F2487. HP PIPE SHALL BE FROM A MANUFACTURER WHO IS AN EASTERN STATES CONSORTIUM (ESC) QUALIFIED MANUFACTURER OF HP STORM PIPE AND INSTALLED IN ACCORDANCE WITH PIPE MANUFACTURE RECOMMENDATIONS.
18. PIPE LENGTHS ON THIS PLAN HAVE BEEN MEASURED AS THE DISTANCE BETWEEN THE CENTER POINT OF THE 2 CONNECTED STRUCTURES. ACTUAL PHYSICAL PIPE LENGTH FOR INSTALLATION IS EXPECTED TO BE LESS AND SHOULD BE ACCOUNTED FOR BY THE CONTRACTOR ACCORDINGLY.

Crossing #	Pipe 1 - Top of Pipe	Pipe 2 - Bottom of Pipe	Seperation
1	6" PVC Pipe 86.13'	15" RCP Pipe 87.80'	1.67'
2	6" PVC Pipe 87.80'	12" HDPE Pipe 91.12'	3.32'
3	6" PVC Pipe 89.59'	15" HDPE Pipe 92.43'	2.84'

GRADING/UTILITY GRAPHIC LEGEND

PROPERTY LINE (PARCEL IN QUESTION)	OFF-SITE PROPERTY LINES
EXIST. CABLE LINE	EXIST. SPOT ELEVATIONS
EXIST. CABLE LINE	EXIST. UTILITY ELEV.
EXIST. ELECTRIC LINE	EXIST. TOP OF CURB ELEV.
EXIST. ELECTRIC LINE	EXIST. FINISH FLOOR ELEV.
EXIST. FIBER OPTIC LINE	EXIST. GARAGE FLOOR ELEV.
EXIST. FIBER OPTIC LINE	EXIST. FIRE HYDRANT
EXIST. GAS LINE	EXIST. WATER VALVE
EXIST. GAS LINE	EXIST. GAS VALVE
EXIST. OVERHEAD WIRES	EXIST. GAS METER
EXIST. OVERHEAD WIRES	EXIST. ELECTRIC METER
EXIST. TELEPHONE LINE	EXIST. ELECTRIC BOX
EXIST. TELEPHONE LINE	EXIST. CLEAN OUT
EXIST. UNDERGROUND ELEC./TELE. SERVICE (NO. & SIZE OF CONDUITS NOT DEFINED)	EXIST. TELEPHONE BOX
EXIST. UNDERGROUND ELEC./TELE. SERVICE (NO. & SIZE OF CONDUITS NOT DEFINED)	EXIST. CABLE TV BOX
EXIST. WATER LINE	EXIST. UTILITY POLE
EXIST. WATER LINE	EXIST. GUY WIRE
EXIST. SANITARY SEWER LINE	EXIST. LIGHT POLE
EXIST. SANITARY SEWER LINE	EXIST. BUILDING LIGHT
EXIST. STORM DRAIN LINE	EXIST. SHOE BOX LIGHT
EXIST. STORM DRAIN LINE	EXIST. COBRA LIGHT POLE
EXIST. MINOR CONTOUR & ELEVATION	EXIST. TRAFFIC SIGNAL POLE
EXIST. MAJOR CONTOUR & ELEVATION	EXIST. MANHOLE
EXIST. FINISH GRADE CONTOUR & ELEVATION	EXIST. "A" INLET
EXIST. MONITORING WELL	EXIST. "B" INLET
APPROX. TEST PIT LOCATION	EXIST. "C" INLET
	EXIST. YARD INLET
	EXIST. FLARED END SECTION
	EXIST. HEADWALL



DYNAMIC ENGINEERING
LAND DEVELOPMENT CONSULTING • PERMITTING
TRAFFIC • SURVEY • PLANNING & ZONING
245 Main Street, Suite 110
Chester, NJ 07930
T: 908.879.9229 | F: 908.879.0222
Offices conveniently located at:
Little Ferry, NJ • 1-762-714-1438
Cherry Hill, NJ • 1-908-879-9229
Newark, NJ • 1-973-757-7207
Denville, NJ • 1-732-947-0781
Newtown, Pennsylvania • 1-215-485-0579
Philadelphia, Pennsylvania • 1-215-333-4088
Arling Heights, IL • 1-708-334-2100
Indianapolis, IN • 1-317-389-4400
Atlanta, GA • 1-770-444-0044
Del Rio, Texas • 1-512-971-8570

THIS PLAN SET IS FOR PERMITTING PURPOSES
ONLY AND MAY NOT BE USED FOR CONSTRUCTION

DESIGNED BY: KHC
CHECKED BY: KHC/DRL
DTS
PROJECT: **CSH OLD TAPPAN, LLC**
PROPOSED ASSISTED LIVING FACILITY
BLOCK 1606, LOT 3
244 OLD TAPPAN ROAD
BOROUGH OF OLD TAPPAN, BERGEN COUNTY, NEW JERSEY

811
Call before you dig
FOR STATE-SPECIFIC DIRECT PHONE NUMBERS VISIT:
WWW.CALL811.COM

DYNAMIC ENGINEERING
LAND DEVELOPMENT CONSULTING • PERMITTING
TRAFFIC • SURVEY • PLANNING & ZONING
245 Main Street, Suite 110
Chester, NJ 07930
T: 908.879.9229 | F: 908.879.0222
Offices conveniently located at:
Little Ferry, NJ • 1-762-714-1438
Cherry Hill, NJ • 1-908-879-9229
Newark, NJ • 1-973-757-7207
Denville, NJ • 1-732-947-0781
Newtown, Pennsylvania • 1-215-485-0579
Philadelphia, Pennsylvania • 1-215-333-4088
Arling Heights, IL • 1-708-334-2100
Indianapolis, IN • 1-317-389-4400
Atlanta, GA • 1-770-444-0044
Del Rio, Texas • 1-512-971-8570

www.dynamiccec.com

DANIEL T. SEHNAL
PROFESSIONAL ENGINEER
NEW JERSEY LICENSE NO. 53572

JOSEPH G. JAWORSKI
PROFESSIONAL ENGINEER
NEW JERSEY LICENSE NO. 36618

TITLE: **DRAINAGE AND UTILITY PLAN**

SCALE: (H) 1" = 30'
(V) 1" = 30'

DATE: 05/18/2021

PROJECT NO: 1423-99-006

SHEET NO: **7**

Rev. #:

OF 20 3